

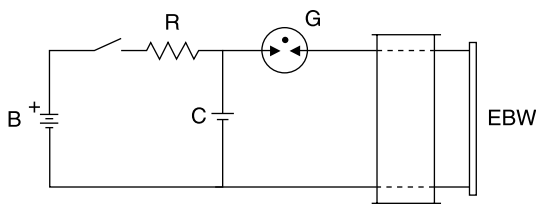
Many applications in electronic circuits require a fast-acting switch capable of transferring stored electrical energy, usually from a storage capacitor to a load circuit. Typical applications include the following:

- Discharge Lamp Igniters (HID or Glow Lamps)
- Gas Igniters (Gas Dryers or Water Heaters)
- Pulsed Light Sources (Xenon Photo Flash)
- Exploding Bridge Wires (EBW)
- Crowbarring Power Supplies

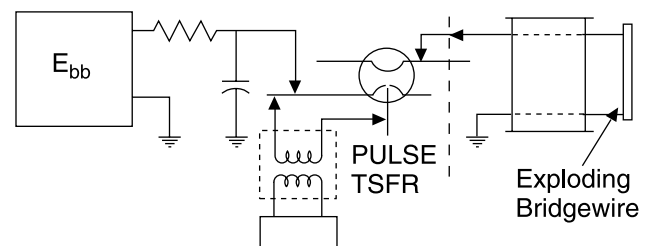
When the voltage level is low (<100V) and currents do not exceed 1A, transistor circuits may be used. When the voltages exceed several hundred volts and currents exceed 1-10A, spark gaps become especially suitable in terms of cost, size, standby readiness, and minimum associated circuit requirements. Spark gaps may be designed to handle extremely high currents for short durations and at high voltage levels while still contained in a relatively small space. These devices can operate over wide temperature extremes (as great as -55°C to +125°C), they are unaffected by variations in pressure and humidity, and can withstand high levels of shock and vibration. Since these devices are made for cold cathode operations, no heater circuits or standby power is required.

A two electrode spark gap requires the least amount of associated circuitry (see Figure 1A). For energy transfer, the storage capacitor must begin to charge from time zero until the breakdown voltage of the “switch” is reached. At this point, the impedance of the spark gap quickly drops from several thousand megohms to a few ohms and the storage capacitor discharges at a rate limited by the circuit impedance.

In applications where “instantaneous” switching is required, a triggered spark gap is used (see Figure 1B below). Here, the storage capacitor is charged prior to the energy demand. Since the main static breakdown voltage of the triggered spark gap is greater than the charge voltage of the storage capacitor, the storage capacitor remains charged. Upon application of an appropriate trigger pulse, the “switch” will rapidly close (typically 0.1µs delay time) and the stored energy will be transferred to the load circuit. (For more information, see our Application Note, “Use of Triggered Spark Gaps”.)



1A



1B

Figure 1 - Connection of Two Electrode (A) and Triggered (B) Spark Gaps for Energy Transfer

Contact Information:

High Energy Devices, LLC
26 Hollenberg Court
Bridgeton, MO 63044
Phone: 314.291.0030
Fax: 314.291.8184
E-mail: info@highenergydevices.com
www.highenergydevices.com

HIGH ENERGY DEVICES, LLC MAKES NO REPRESENTATIONS OR WARRANTIES WITH RESPECT TO THE ACCURACY OR COMPLETENESS OF THE CONTENTS OF THIS PUBLICATION AND RESERVES THE RIGHT TO MAKE CHANGES TO SPECIFICATIONS AND PRODUCT DESCRIPTIONS AT ANY TIME WITHOUT NOTICE. NEITHER CIRCUIT PATENT LICENSES NOR INDEMNITY ARE EXPRESSED OR IMPLIED. EXCEPT AS SET FORTH IN HIGH ENERGY DEVICES' STANDARD TERMS AND CONDITIONS OF SALE, HIGH ENERGY DEVICES, LLC ASSUMES NO LIABILITY WHATSOEVER, AND DISCLAIMS ANY EXPRESS OR IMPLIED WARRANTY, RELATING TO ITS PRODUCTS INCLUDING, BUT NOT LIMITED TO, THE IMPLIED WARRANTY OF MERCHANTABILITY, FITNESS FOR A PARTICULAR PURPOSE, OR INFRINGEMENT OF ANY INTELLECTUAL PROPERTY RIGHT.

THE PRODUCTS DESCRIBED IN THIS DOCUMENT ARE NOT DESIGNED, INTENDED, AUTHORIZED OR WARRANTED FOR USE AS COMPONENTS IN SYSTEMS INTENDED FOR SURGICAL IMPLANT INTO THE BODY, OR IN OTHER APPLICATIONS INTENDED TO SUPPORT OR SUSTAIN LIFE, OR WHERE MALFUNCTION OF HIGH ENERGY DEVICES' PRODUCT MAY RESULT IN DIRECT PHYSICAL HARM, INJURY, OR DEATH TO A PERSON OR SEVERE PROPERTY OR ENVIRONMENTAL DAMAGE. HIGH ENERGY DEVICES, LLC RESERVES THE RIGHT TO DISCONTINUE OR MAKE CHANGES TO ITS PRODUCTS AT ANY TIME WITHOUT NOTICE.

Specification: AN-SG-30
©Copyright 2002, High Energy Devices, LLC
All rights reserved. Printed in USA
March 2008.